

Drywall

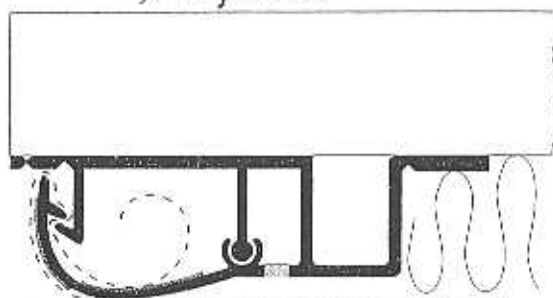
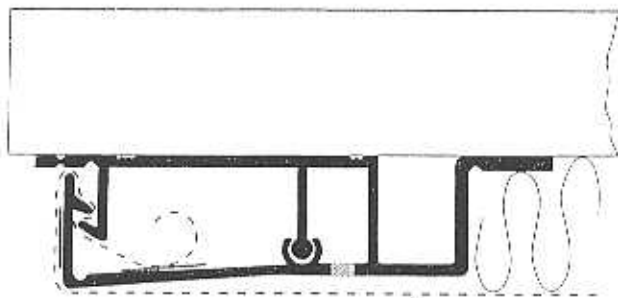


Figure A
SnapLoc 90 (closed)

Free-floating stretched fabric

Figure B
SnapLoc Radius (closed)

Free-floating stretched fabric

The SnapLoc system

1. Fabric is mechanically locked into the jaws of the profile.
2. Exterior glue surface holds the fabric in place at the outside edge of the profile which eliminates a "picture frame" effect.
3. Secondary glue surface offers additional grip and support and increases the further tensioning and stretching of the fabric.
4. Overlapping hook design crimps the fabric and locks it into place accepting both thick and thin fabrics.
5. Ball-and-socket assembly maintains compression to keep the profile closed and prevent the cover from shifting as the fabric expands and contracts under tension.
6. Flexible hinge creates a lever action which holds the fabric taut. The hinge allows multiple openings and closings permitting reupholstery without replacing the profile.
7. Basting surface allows fabric to be laced, cured, stretched, and aligned.
8. Tapered design makes it possible for the fabric to float freely avoiding a "picture frame" effect.
9. The 1/2-in. profile height allows the total integration with 1/2-in. StretchWall, 1/2-in. wood panels, and 1/2-in. infill materials.

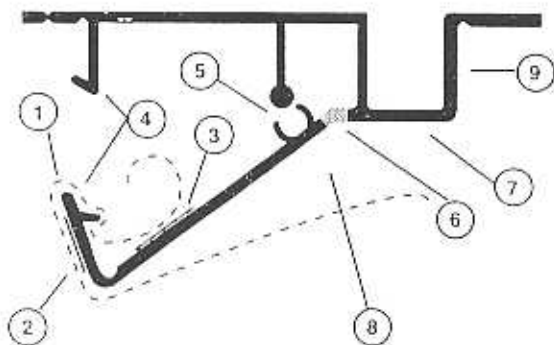


Figure C
SnapLoc 90 (open)

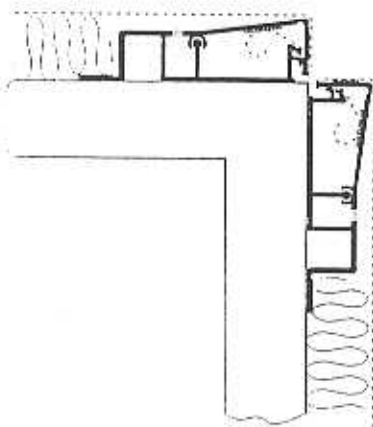


Figure D: SnapLoc 90
Quirk-reveal outside corner

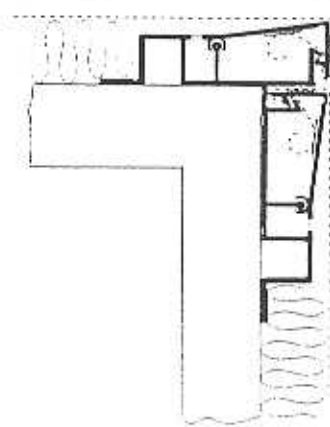


Figure E: SnapLoc 90
Outside wrapped corner

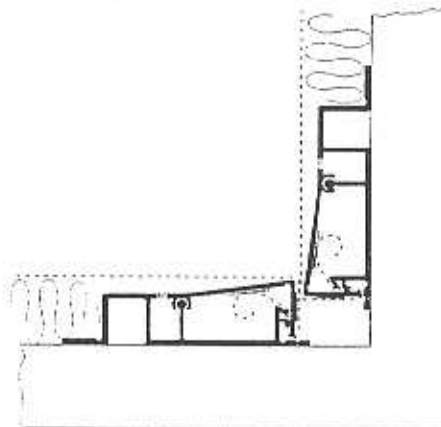


Figure F: SnapLoc 90
Tight inside corner

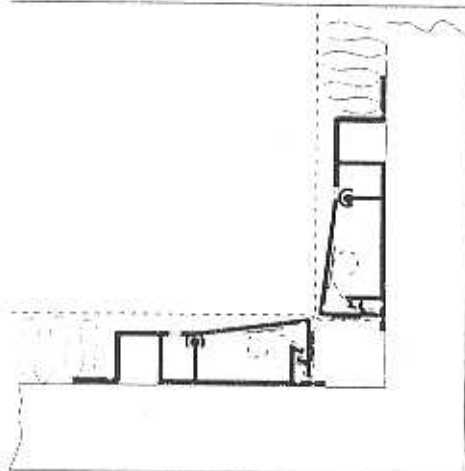


Figure G: SnapLoc 90
Inside corner

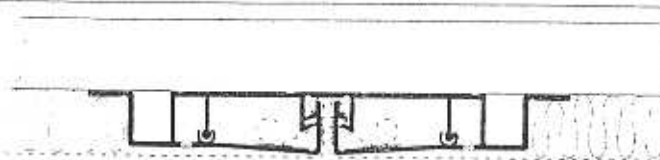


Figure H: SnapLoc 90
Bull joint

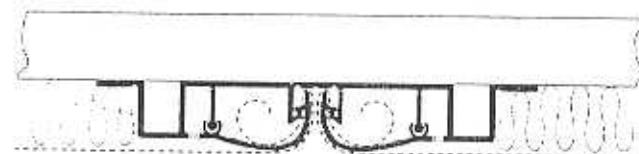


Figure I: SnapLoc Radius
Bull joint